

# CF-1.8, CF-1.9, and onwards

**David Hassell**  
NCAS  
University of Reading

CF meeting, online, 2020-06-10

# CF release (CF-1.8)

CF-1.8

# CF releases ( $\leq$ CF-1.8)

CF-1.0

CF-1.1

CF-1.2

CF-1.3

CF-1.4

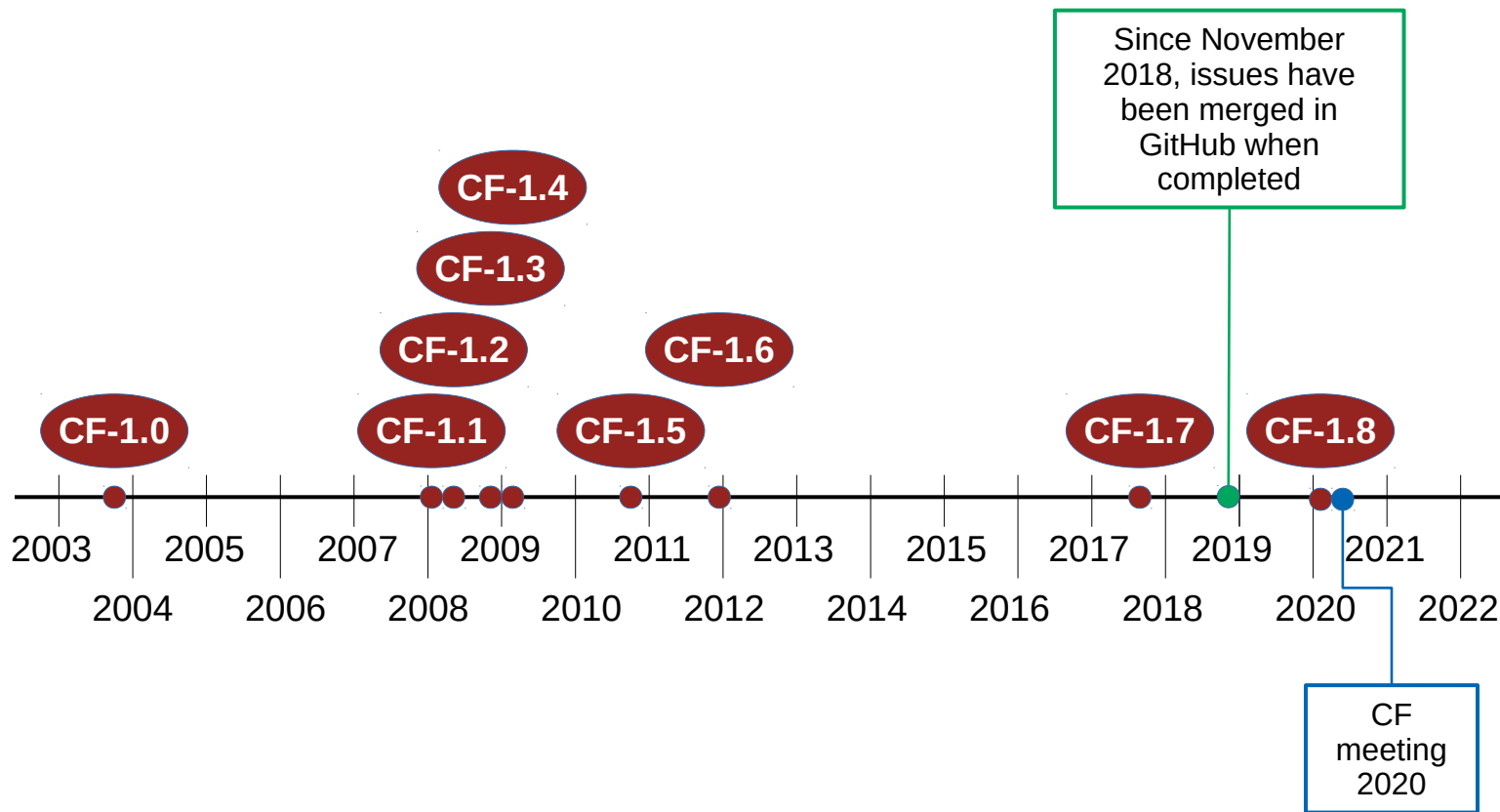
CF-1.5

CF-1.6

CF-1.7

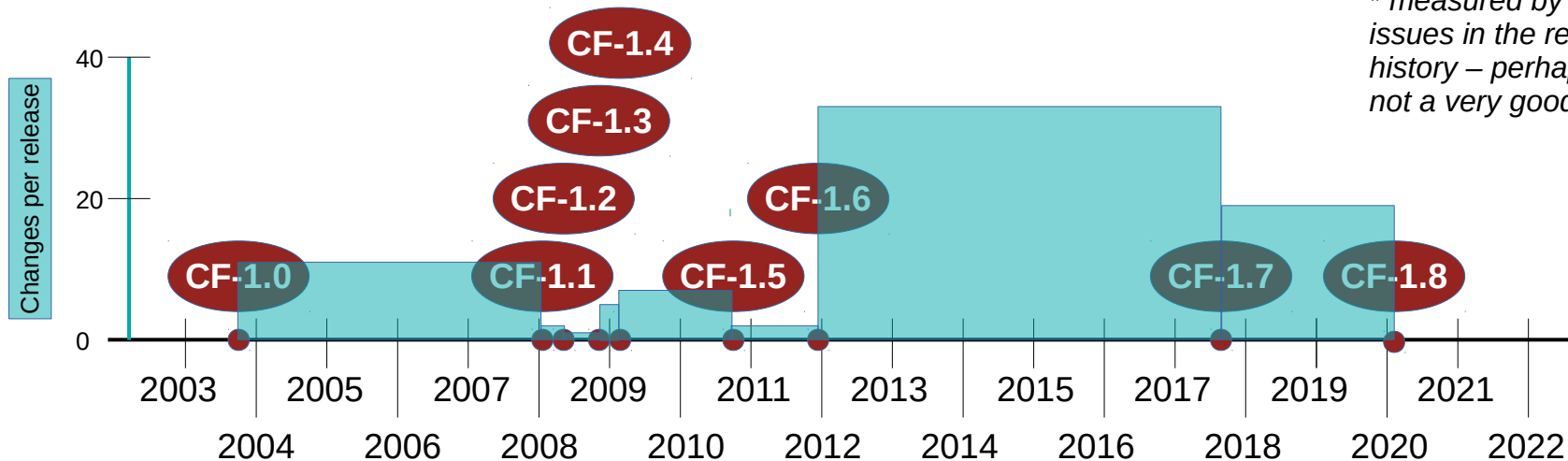
CF-1.8

# CF releases ( $\leq$ CF-1.8)



# Activity between releases

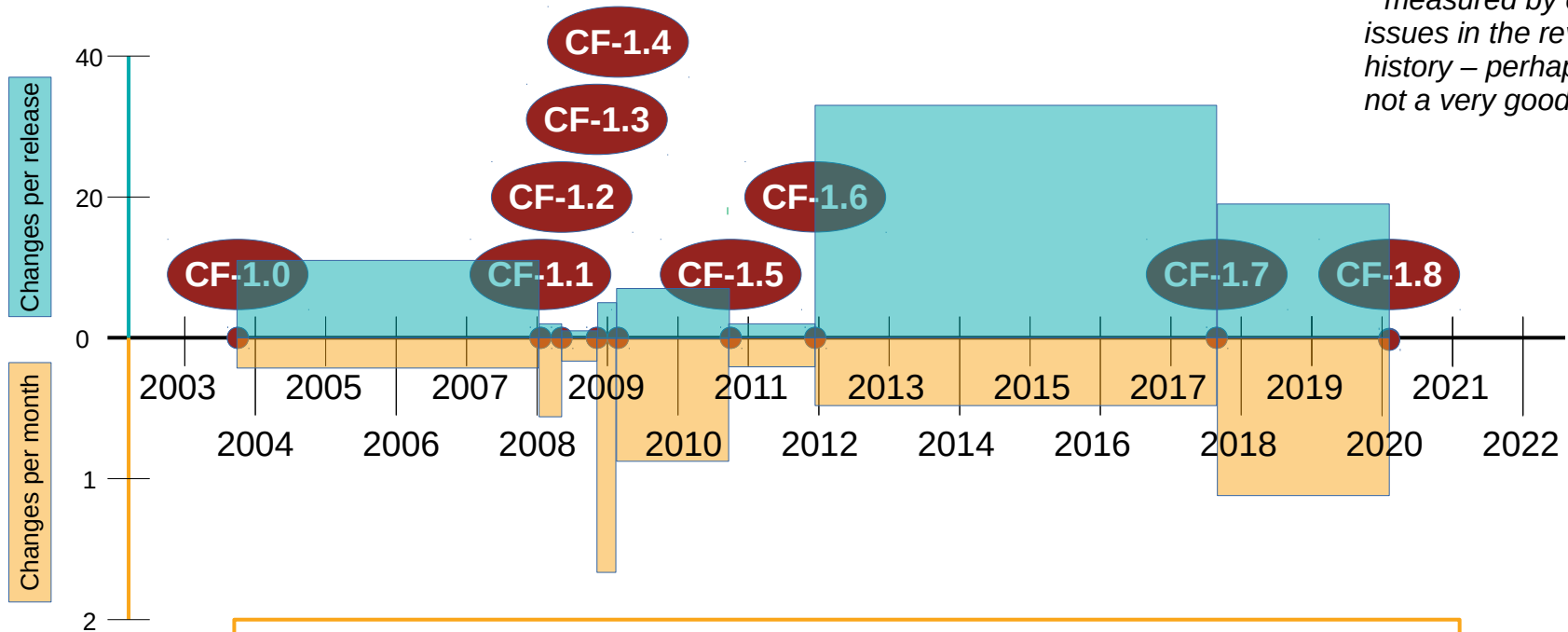
CF activity measured by the **number of changes\*** between releases



*\* measured by counting issues in the revision history – perhaps not a very good metric*

# Activity between releases

CF activity measured by the **number of changes\*** between releases

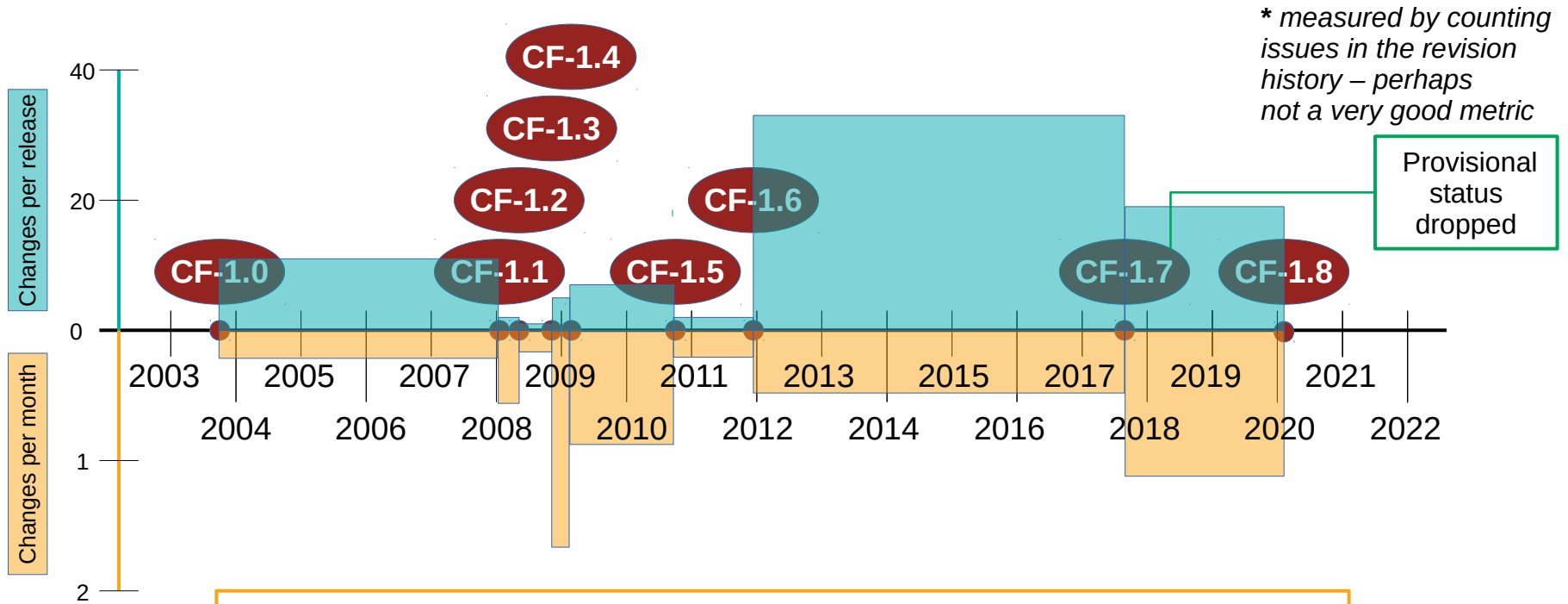


*\* measured by counting issues in the revision history – perhaps not a very good metric*

CF activity measured by the **average number of changes\*** per month between releases

# Activity between releases

CF activity measured by the **number of changes\*** between releases



CF activity measured by the **average number of changes\* per month** between releases

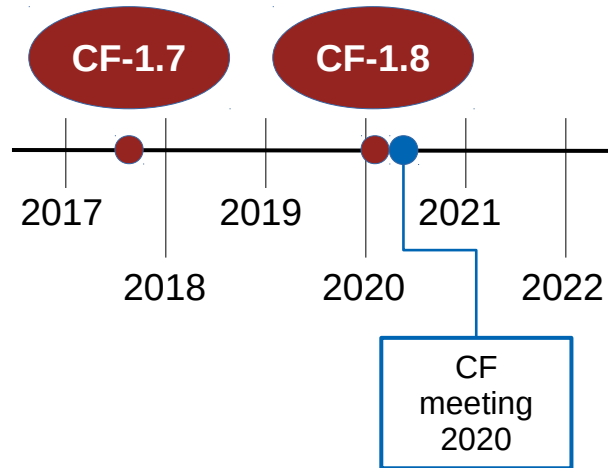
# What went in to CF-1.8

- **Geometries** #115 #158
- **Groups** #145 #180 #209
- **Longitude and Latitude not required for projected coordinates enhancement** #133
- **Add support for variables of type string** #140
- Conformance requirements #227
- Update usage of false\_easting and false\_northing in projections #225
- Coordinate value order for CRS WKT #224
- Taxon names and identifiers #219
- Clarification of use of standard region names in "region" variables #199 #200
- Correction of some inconsistencies regarding cf\_role #189
- Conformance requirements #227
- *Minor defects* #128 #142 #146 #185 #202 #214
- Revision history 1.8 #234

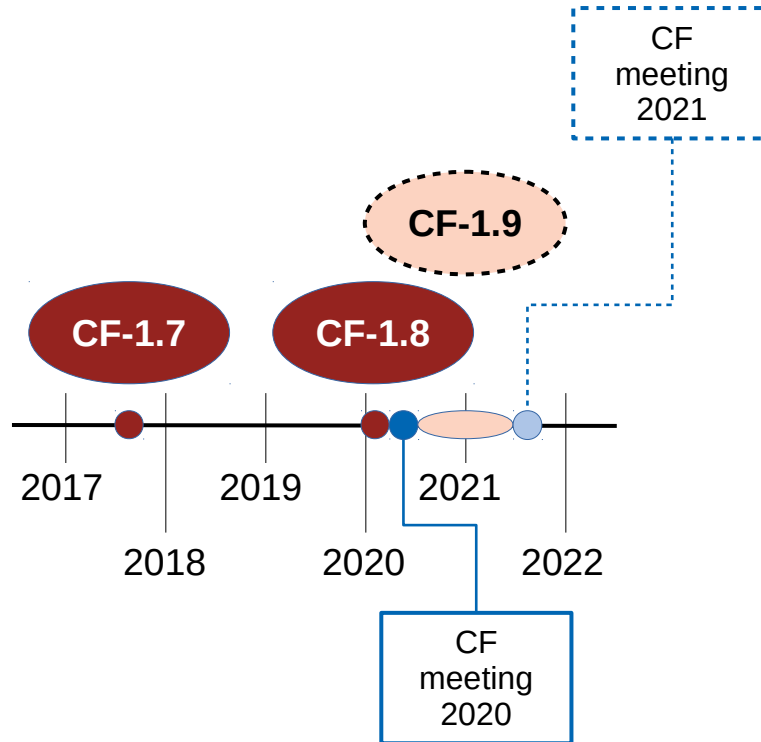
**Bold: discussed at previous CF meetings**



# Timeline of CF releases



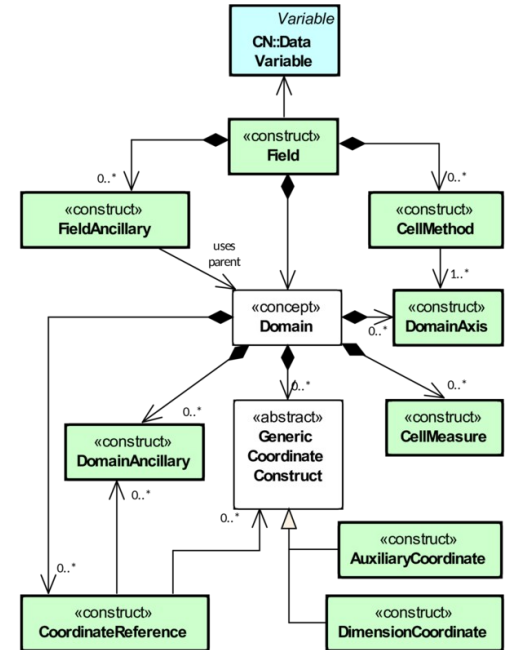
# Timeline of CF releases ( $\leq$ CF-1.9)

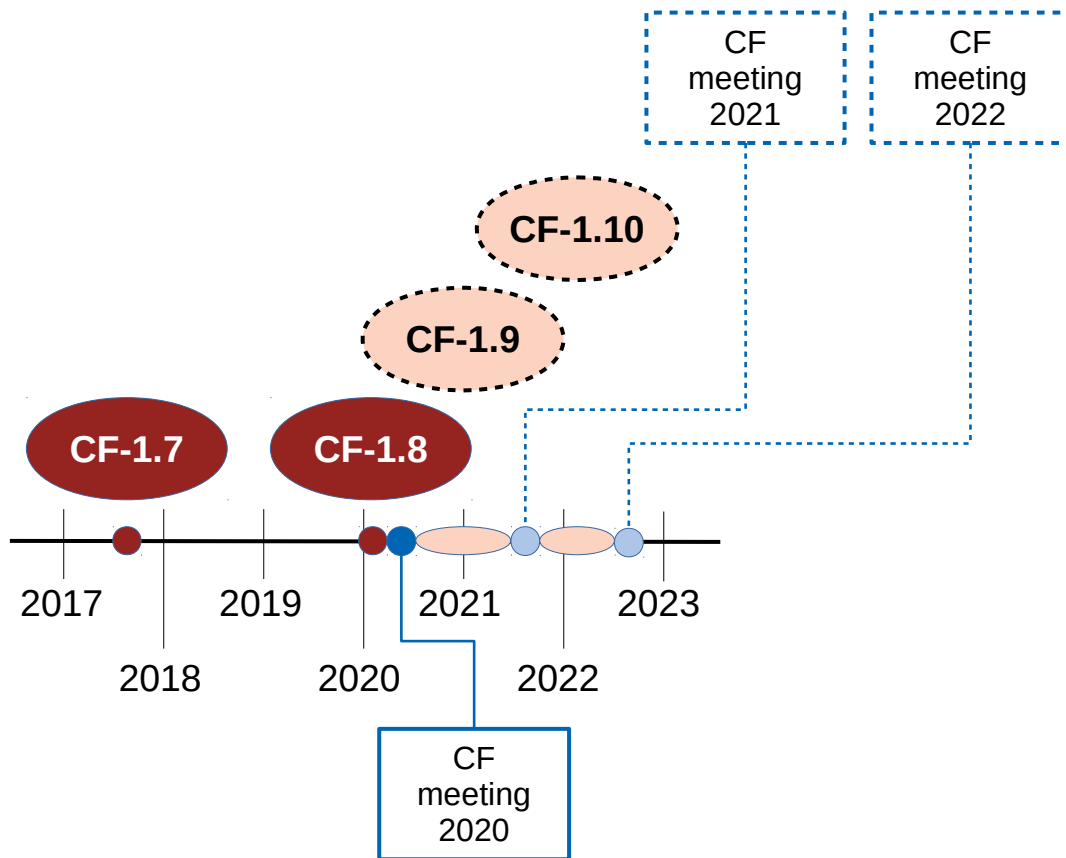


- To date, 7 pull requests have already been merged and *will* go into CF-1.9:
  - Clarify geostationary projection items [#259](#)
  - Replaced PROJ.4 by PROJ; updated URLs [#254](#)
  - **Incorporating the CF data model into the conventions** [#250](#)
  - Add new integer types [#244](#)
  - Resolve Example 3.4 and 3.5 mis-ordering issue [#240](#)
  - Amend broken link (RE COARDS Conventions) in bibliography [#236](#)
  - Fix geostationary projection [#232](#)
- There are 43 open issues, for which there are 4 open pull requests:
  - Extend the data model for Geometries [#270](#)
  - Removing unnecessary dimensions [#268](#)
  - Chap 3.4 ancillary quality flags [#264](#)
  - Explicitly specify earth shape parameters [#242](#)

**Bold: discussed at previous CF meetings**

- The data model will appear in the conventions document (**appendix I**) for the first time in CF-1.9. This will then be the canonical definition of the data model.
- Originally written for CF-1.6
- Changes for CF-1.7 did not require any data model changes
- Geometries in CF-1.8 (**section 7.5**) required backwards-compatible data model changes
  - A generalisation of the notion of “cell bounds”
  - Allowed that, in particular circumstances, cell bounds may exist *without* cell coordinates.
- No changes that have been already accepted, or currently proposed, for CF-1.9 require further changes to the data model.





- **CF-1.9**

- Release before the 2021 CF meeting

- **CF-1.10**

- Double digits!
- Release before the 2022 CF meeting

- **etc.**

NCAS work on CF is additionally supported by the IS-ENES3 project funded by the European Commission under grant agreement N°824084