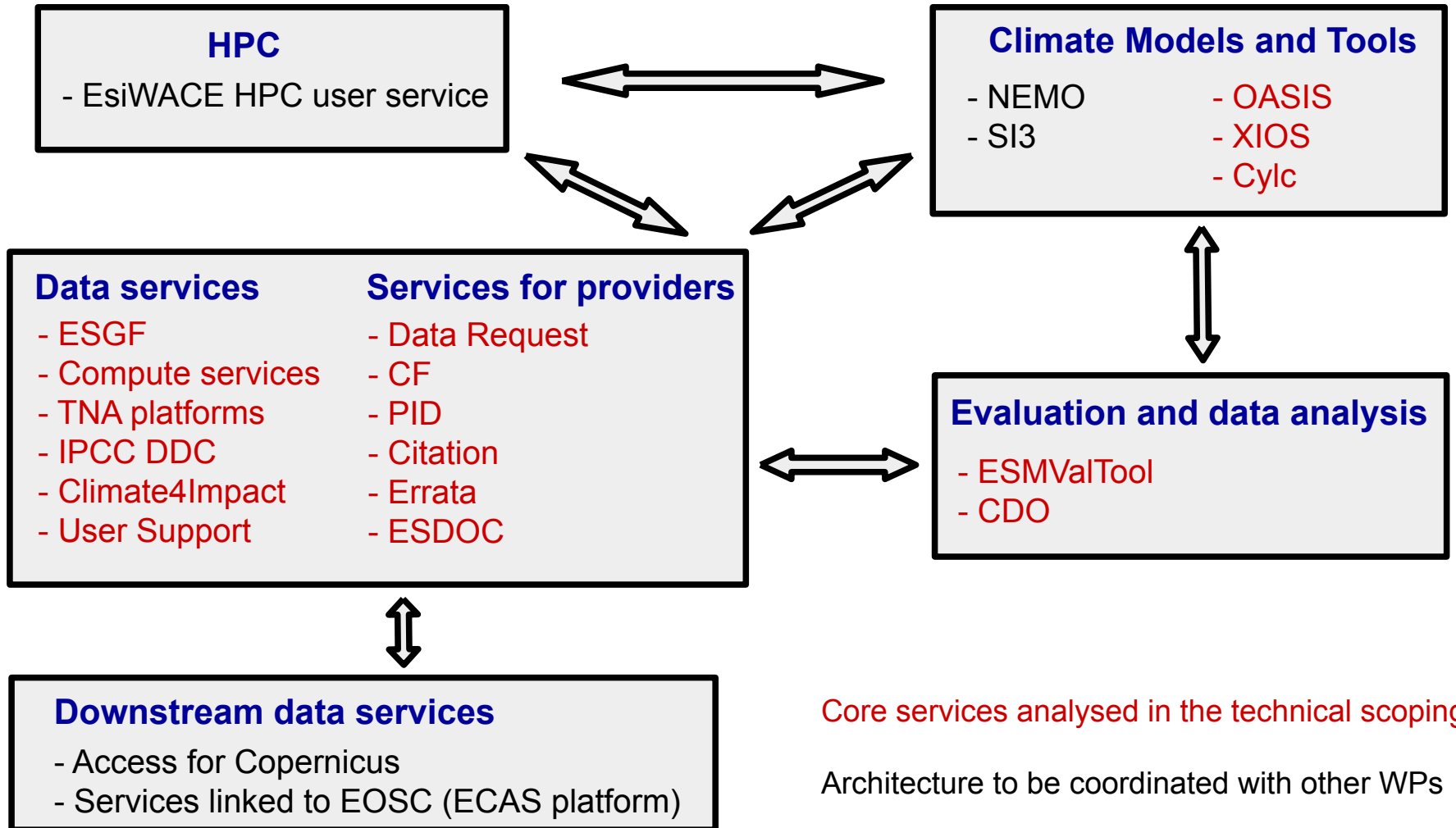


Introduction to Sustainability (WP2-NA1)

Fanny Adloff, Michael Lautenschlager
and the Sustainability WG



The ENES Research Infrastructure (ENES-RI)

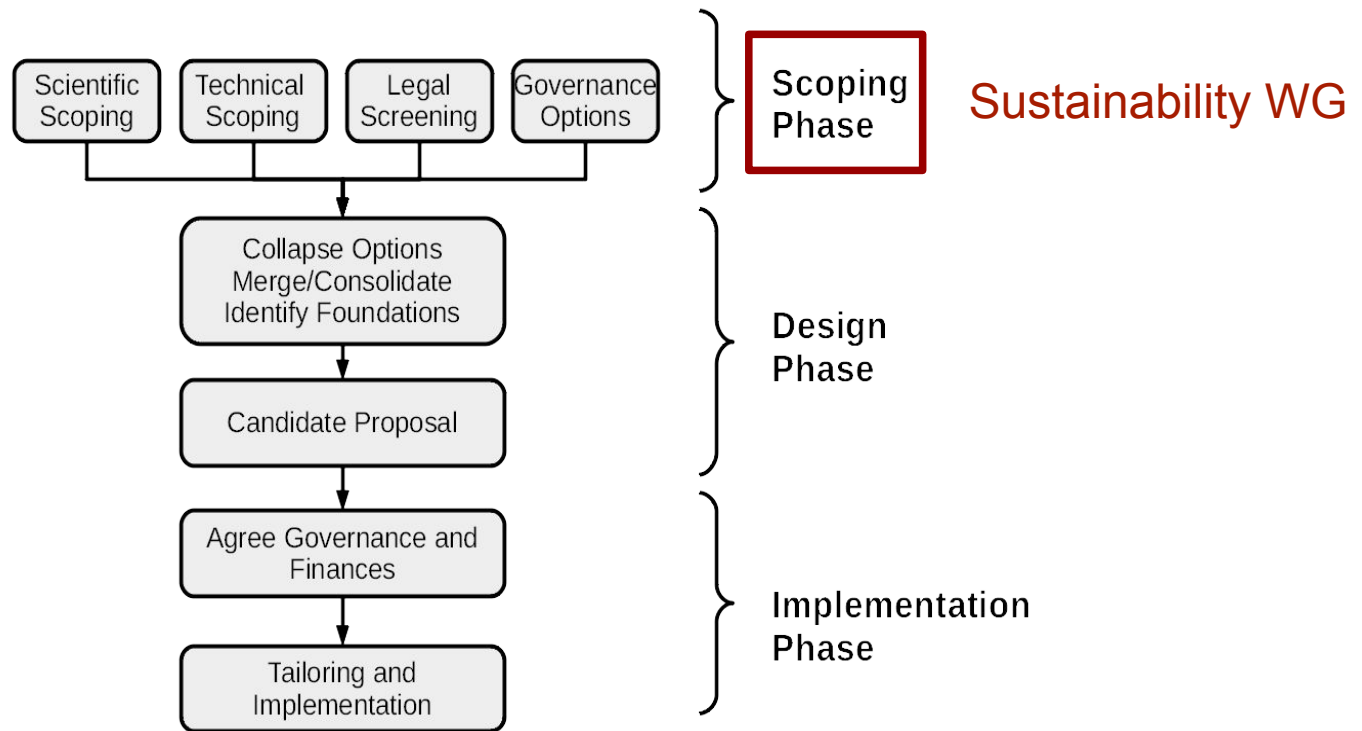


Core services analysed in the technical scoping

Architecture to be coordinated with other WPs

Background on sustainability

Objective: build an infrastructure that guarantees long-term services to the ENES community



Legal screening – status from Summer 2019

Current options

- Letter of Intent/Letter of Commitment
- Memorandum of Understanding
- Consortium Agreement
- AISBL, Belgian Law (e.g. EUFAR, PRACE, SeaDataNet)
- Dutch foundation (EGI)
- ERIC

Aspects being considered

- Legal entity
- Binding agreement
- Duration
- Signatory parties
- Minimum number and nationality of partners
- Membership modalities imposed by the agreement
- Statutory seat / headquarters location
- Governance implications
- Access to EU funding scheme as one entity/partner
- Timeline to establish (necessary stages)
- ... etc...

Next steps

- Steering committee shall decide on a short list of possible options
- Short list of options to be discussed with legal departments at institutional level

Governance

- IS-ENES Stakeholder Board will be set-up at the end of the scientific scoping phase
- Will depend to some extent on the legal option chosen

Full table available: <https://drive.google.com/file/d/1ypP-vV8ibTgqHQd5JHqoJBssRo8E0I7Q/view?usp=sharing>



Technical scoping: ENES-RI as of March 2020

Service Classification	Service Names	Availability	Funding
Remote at infrastructure sites	ESGF data service	24/7 SLA	Inst. + Nat. + EU
	Compute service, IPCC-DDC	24/7 Best Effort	Inst. + Nat. + EU
	Errata service, ES-DOC, SYNDA data replication, C4I portal	24/7 Best Effort	Inst. + EU
	Citation service, PID service	24/7 Best Effort	Inst.
Data management	Data request service	24/7 Best Effort	Inst. + Nat. + EU
	CF convention support	Best Effort	Inst. + EU
Provision of software	Cylc	24/7 Best Effort	Inst.
	OASIS, XIOS	Best Effort	Inst. + EU
	CDO	Best Effort	Inst.
	ESMVal	Best Effort	Nat. + EU

 Technical Scoping Synthesis Report: https://docs.google.com/document/d/1BM9uIAvia_5rjuoWrJq5FAh02-ITFL1Q_TfIN_T9wZ0/edit?ts=5e7254ef


Technical scoping: ENES-RI as of March 2020

HPC and Tools

- Provision of software with download and local usage.
- Operates on a best effort basis.

Funding: mainly institutional and European.

Sustainability: depends on the engagement of persons and the leading institute(s).

ENES-CDI

- Remote end user services and ESGF supporting services.
- Operates on a 24/7 best effort basis, have availability commitments against ESGF.
- Data management services (CF conventions and data request)
- Operate on a 24/7 best effort basis

Funding: institutional, national and European.

Sustainability: depends on institutional engagement and on a continuous stream of project money.

Operations

Funding: no direct funding for operational services nor collection of service fees from users.

Sustainability: problematic for ENES-RI sustainability because institutional engagement is connected to synergy effects, and project money is for development and improvement, but not for operations.

Scientific scoping - consultations

40 people consulted with most participants from Modelling and Data Users communities

Awareness

- Very little awareness of the services provided by the ENES-RI except for OASIS, XIOS, ESGF, ESMValTool and NEMO.

Dependencies

- Significant number of users are dependent on OASIS, XIOS, ESGF, ESMValTool and NEMO.
- Many other dependencies raised by less users per service.

Involvement in IS / Software development projects

- Most users are involved in such projects across more than one European institution.

Pros and Cons of sharing tools

- Main pros: gain of time / efficiency, better service quality, better inter-comparability of data...
- Main cons: less responsive to institutional needs, creates dependencies, decreases diversity...

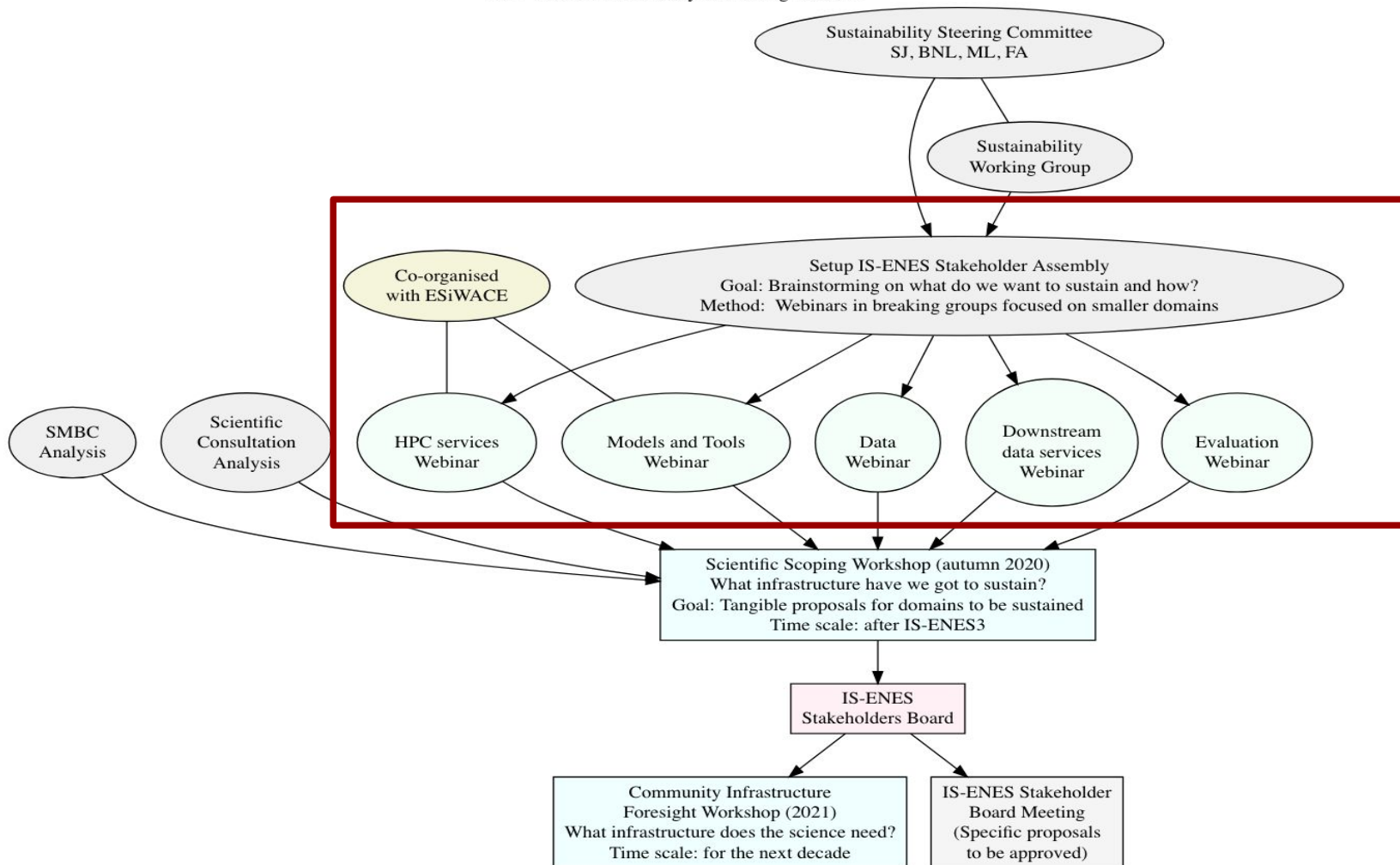
What is missing in the current European IS

- Needs more information / communication, a common governance (with single focus) to help addressing the issue of sustainability.
- Importance to keep bottom-up approach when looking for IS solutions.

Scient. Consult. Synthesis Report: https://docs.google.com/document/d/1avo20wICDrvm6BDwVwXDBEdWrXRIQmJUraZVzQqp4_w/edit?usp=sharing



Scientific scoping - next steps



Summary

Current status

Completed:

- Technical scoping
- Scientific consultations

Ongoing:

- Legal screening: short-list to be done and submitted to legal departments
- Scientific scoping: domain brainstorming webinars in preparation

Next steps

- Scientific scoping workshop (autumn 2020)
- Set-up IS-ENES Stakeholders Board (end 2020)



THE CONSORTIUM

Coordinated by CNRS-IPSL, the IS-ENES3 project gathers 22 partners in 11 countries

Partners shown include: CNRS, Met Office, BSC, CMCC, SMHI, UC, METEO FRANCE, WAGENINGEN, NORCE, and others.

If you are interested in joining the Sustainability group, please email me and I will add you to the Slack channel!

fanny.adloff@ncas.ac.uk

Our website
<https://is.enes.org/>

Follow us on Twitter !
[@ISENES_RI](https://twitter.com/ISENES_RI)

Contact us at
is-enes@ipsl.fr

Join the community on ZENODO !

